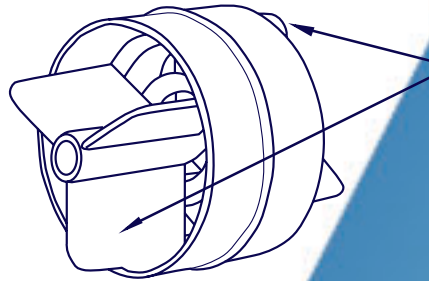


ANTI WAVE POOL PRODUCTS

"MINI DISC LANE DIVIDER" LANE Specifications Sheet

LANE SPECIFICATIONS:

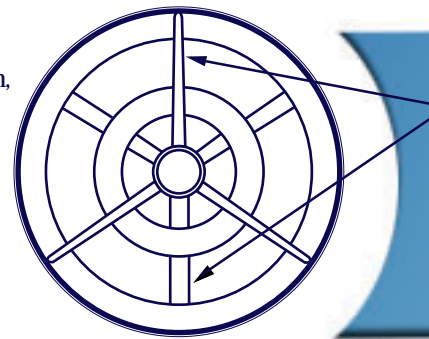
Each lane comprises a number of discs (injection molded in durable polyethylene, with additives for maximum UV and chemical resistance) supplied loose with a stringing instruction sheet. Interspersed every 5-7 discs (depending on pattern) are ovoid blow-molded floats. Discs are threaded onto a supplied length of 1/4" polypropylene twisted rope. Stainless steel end hooks (provided) are attached to both ends of the rope.



Three fins on both sides of the disc extend fully to engage with adjacent fins, thereby creating a solid wave-retention barrier. No water gets through.

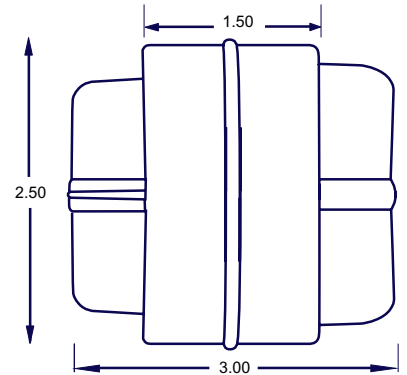
STANDARD COLORS ARE:

Disc & Float: Red, White, Royal Blue, Yellow, Green, Black, Grey, Navy Blue, Teal, Orange, Maroon, Purple.

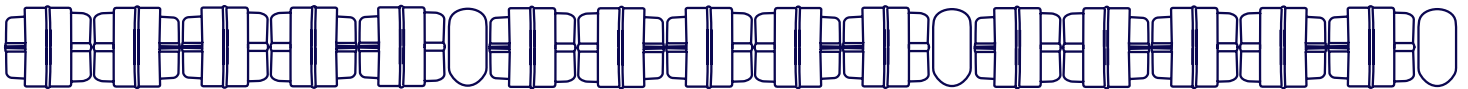


Internal ribs and walls are designed to optimize the impact-reducing capabilities of the disc, while keeping weight to the requisite level.

Mini Lane dividers provide about 60% of the wave-quell effect of racing lanes.



"MINI DISC" LANE STRINGING PATTERNS



60 ft lane: Hook + (1 x 60) + (9 x 12) + (1 x 60) + Hook
Total: 228 discs, 37 floats.

75 ft lane: Hook + (1 x 60) + (2 x 12) + (11 x 11) + (2 x 12) + (1 x 60) + Hook
Total: 289 discs, 49 floats.

25 m lane: Hook + (1 x 60) + (5 x 12) + (8 x 11) + (4 x 12) + (1 x 60) + Hook
Total: 316 discs, 53 floats.

50 m lane: Hook + (1 x 60) + (18 x 12) + (7 x 13) + (18 x 12) + (1 x 60) + Hook
Total: 643 discs, 105 floats.

All AntiWave products are supported by a 3-year warranty



ANTI WAVE POOL PRODUCTS "Simply the Best"

1144 Northwest 53rd Street, Seattle, WA 98107

Tel: 206.676.8209 Fax: 206.784.9708 www.antiwave.com

